

**DALLAS FORT WORTH  
INTERNATIONAL AIRPORT**

**ADDENDUM NO. 2**

**Northeast End Around Taxiway Package I  
East Air Freight Taxiway and Utilities**

**CONTRACT NO. 9500623**

**February 23, 2018**

The Request for Bids for the above is hereby revised as follows:

This Addendum No. 2 contains revisions and additions to the RFB, Plan Drawings, Technical Specifications, and Bid Schedule as summarized below:

- Scope revisions and addition summary:
  - Revisions to the duration of Work area 2A
  - Revisions to Drainage Plans
  - Revisions to Waterline Plans
  - Detail of fuel line protection
  - Additional Visual Screen Details
  - Revision to Super elevation of ARFF Roadway
  - Revisions to FOTS Shelter Demolition
  - Details of FOTS Cable Routing and Terminations
  - Details of FAA Cable Distribution System
  - Revise Guidance Signs from Pay Item (to be procured by Owner)
  - Remove Pay Item for Modifications to Airfield Lighting and Control and Monitoring System (ALMCS)
- Revisions to CSPP to reflect the change in durations described above
- Revisions and clarifications to address Contractor questions.

This summary does not constitute all revisions. It is incumbent upon the Contractor to review the contract documents to assess all revisions

**Technical Specifications Revisions**

1. The Technical Specifications have been updated to include new, revised, and/or removed specifications as indicated in the table below and as provided in Attachment A – Technical Specification Revisions.

Name	New	Revised	Removed
00 01 07 – Seals Page		X	
00 01 10 – Table of Contents		X	
01 11 00 – Summary of Work		X	
01 30 00 – Allowances		X	
01 50 13 – Owner’s Field Office		X	
01 57 13 – Temporary Erosion and Sedimentation Control		X	
26 42 01 – Pipe Bonding and Test Stations		X	
26 42 02 – Galvanic Anode Cathode Protection System		X	
31 60 00 – Installation of Carrier Pipe in Steel Casing	X		

Name	New	Revised	Removed
33 05 01.05 – Reinforced Concrete Cylinder Casing Pipe			X
33 05 01.09 – Polyvinyl Chloride (PVC) Pressure Pipe and Fittings		X	
33 12 16 – Water Utility Distribution Valves		X	
33 12 16.29 – Air and Vacuum Release Valve Assemblies		X	
40 27 00 – Steel Casing Pipe	X		
P-101 – Surface Preparation		X	
P-102 – Concrete Crushing		X	
P-150 – Demolition and Abandonment		X	
P-152 – Excavation, Subgrade, and Embankment		X	
P-209 – Crushed Aggregate Base Course	X		
P-219 – Recycled Concrete Base Course			X
P-900 – Roadway Paving, Marking, and Signage	X		
F-162 – Chain-Link Fence		X	
F-165 – Visual Screen		X	
D-701 – Pipe for Storm Drains and Culverts		X	
D-705 – Pipe Underdrains for Airports		X	
D-751 – Manholes, Inlets, and Underdrain Cleanouts		X	
D-752 – Concrete Culverts, Headwalls, and Miscellaneous Drainage Structures		X	
D-754 – Concrete Gutters, Ditches, and Flumes			X
D-900 – East Air Freight Drainage Channel Modifications	X		
T-907 – PaveGro Media			X
L-105 – Demolition, Removal, and Relocation		X	
L-108 – Underground Power Cable for Airports		X	
L-109 – Fiber Optic Cable and Hardware	X		
L-110 – Airport Underground Electrical Duct Banks and Conduits		X	
L-112 – Directional Drill		X	
L-115 – Electrical Manholes and Junction Structures		X	
L-121 – Taxiway Lighting Fixtures and Bases		X	
L-123 – Airfield Signage Systems		X	
L-139 – ALSF-2 Substation Addition for Relocated FOTS Equipment		X	
L-309 – Airfield Lighting Control and Monitoring System			X
FAA-STD-061 – Airport Fiber Optic Transmission Syst (FOTS) Std	X		
FAA-E-2761c – Cable, Fiber Optic, Multimode and Single-Mode, Multifiber	X		
340 – Dense Graded Hot Mix Asphalt (Small Quantity)			X
360 – Concrete Pavement			X

### **Plan Sheet Revisions**

1. Plan Sheets have been updated and include new, revised, and/or removed sheets as indicated in the table below and as provided in Attachment B – Plan Sheet Revisions.

Name	New	Revised	Removed
GN-001 – Title Sheet		X	
GN-002 – Index of Drawings		X	
GN-003 – Index of Drawings		X	
GN-101 – General Notes		X	
GC-101A – Materials Management Stockpile Site		X	
GC-104 – Overall Phase 2 Limits and Work Areas		X	

<b>Name</b>	<b>New</b>	<b>Revised</b>	<b>Removed</b>
CE-151 – Erosion Control Post-Construction Plan		X	
CE-152 – Erosion Control Post-Construction Plan		X	
CE-154 – Erosion Control Post-Construction Plan		X	
CE-155 – Erosion Control Post-Construction Plan		X	
CE-157 – Erosion Control Post-Construction Plan		X	
CD-001 – Civil Demolition Legend and Notes		X	
CD-101 – Demolition Plan		X	
CD-102 – Demolition Plan		X	
CD-103 – Demolition Plan		X	
CD-104 – Demolition Plan		X	
CD-105 – Demolition Plan		X	
CD-106 – Demolition Plan		X	
CD-107 – Demolition Plan		X	
CS-101 – Geometry Plan		X	
CS-102 – Geometry Plan		X	
CS-103 – Geometry Plan		X	
CS-104 – Geometry Plan		X	
CS-105 – Geometry Plan		X	
CS-107 – Geometry Plan		X	
CS-301 – Typical Removal Sections		X	
CS-302 – Typical Pavement Sections		X	
CS-303 – Typical Pavement Sections		X	
CS-304 – Typical Pavement Sections		X	
CS-305 – Typical Pavement Sections		X	
CS-306 – Typical Pavement Sections		X	
CG-101 – Grading Plan		X	
CG-102 – Grading Plan		X	
CG-104 – Grading Plan		X	
CG-105 – Grading Plan		X	
CG-107 – Grading Plan		X	
CG-108 – Grading Plan		X	
CG-151 – Drainage Plan		X	
CG-152 – Drainage Plan		X	
CG-153 – Drainage Plan		X	
CG-154 – Drainage Plan		X	
CG-155 – Drainage Plan		X	
CG-156 – Drainage Plan		X	
CG-157 – Drainage Plan		X	
CG-160 – Existing Drainage Area Map		X	
CG-161 – Proposed Drainage Area Map		X	
CG-204 – Taxiway S Profile		X	
CG-205 – Taxiway S Profile		X	
CG-206 – ARFF Road Profile		X	
CG-207 – ARFF Road Profile		X	
CG-301 – Drainage Profiles		X	
CG-302 – Drainage Profiles		X	
CG-303 – Drainage Profiles		X	
CG-303A – Drainage Profiles	X		
CG-304 – Drainage Profiles		X	
CG-305 – Drainage Profiles		X	
CG-306 – Drainage Profiles		X	

<b>Name</b>	<b>New</b>	<b>Revised</b>	<b>Removed</b>
CG-307 – Drainage Profiles		X	
CG-501A – TxDOT Type C & G Inlet	X		
CG-502A – TxDOT Type M Manhole	X		
CG-503 – Drainage Details		X	
CG-503A – TxDOT Safety End Treatment (SetB-PD)	X		
CG-503B – TxDOT Safety End Treatment (SetB-PD) Cont.	X		
CG-505 – Underdrain Details		X	
CG-506 – Underdrain Details		X	
CG-507 – East Cargo Ramp Drainage Channel Typical Sections		X	
CG-600 – I1A Drainage Area Calculations	X		
CG-601 – I1IGL-N3-N4 Drainage Area Calculations	X		
CU-101 – Waterline Relocation Plan Waterline “A”		X	
CU-102 – Waterline Relocation Plan Waterline “B”		X	
CU-103 – Waterline Relocation Plan Waterline “B” and “C”		X	
CU-201 – Waterline Relocation Profile Waterline “A”		X	
CU-202 – Waterline Relocation Profile Waterline “A”		X	
CU-203 – Waterline Relocation Profile Waterline “B”		X	
CU-204 – Waterline Relocation Profile Waterline “B”		X	
CU-205 – Waterline Relocation Profile Waterline “C”		X	
CU-501 – Waterline Details		X	
CU-502 – Waterline Details		X	
CU-503 – Waterline Details		X	
CU-504 – Cathodic Protection Details		X	
CU-800 – Visual Screen Plan		X	
CU-850 – Visual Screen Details		X	
CU-900 – Fuel Line Plan and Profile		X	
CP-109 – Joint Layout Plan		X	
CM-101 – Marking Plan		X	
CM-102 – Marking Plan		X	
CM-103 – Marking Plan		X	
CM-104 – Marking Plan		X	
CM-105 – Marking Plan		X	
CM-107 – Marking Plan		X	
CF-102 – Fencing Plan		X	
ED-001 – Airfield Electrical Demolition Legend and Notes		X	
ED-101 – Airfield Electrical Demolition Plan		X	
ED-102 – Airfield Electrical Demolition Plan		X	
ED-104 – Airfield Electrical Demolition Plan		X	
ED-105 – Airfield Electrical Demolition Plan		X	
ED-106 – Airfield Electrical Demolition Plan		X	
ED-107 – Airfield Electrical Demolition Plan		X	
ES-002 – Airfield Lighting Legend		X	
ES-101 – Airfield Lighting and Signing Layout Plan		X	
ES-102 – Airfield Lighting and Signing Layout Plan		X	
ES-104 – Airfield Lighting and Signing Layout Plan		X	
ES-105 – Airfield Lighting and Signing Layout Plan		X	
ES-107 – Airfield Lighting and Signing Layout Plan		X	
ES-201 – Light Fixture Schedules		X	
EP-101 – Airfield Lighting and Signage Circuiting Plan		X	
EP-102 – Airfield Lighting and Signage Circuiting Plan		X	
EP-104 - Airfield Lighting and Signage Circuiting Plan		X	

<b>Name</b>	<b>New</b>	<b>Revised</b>	<b>Removed</b>
EP-105 - Airfield Lighting and Signage Circuiting Plan		X	
EP-107 - Airfield Lighting and Signage Circuiting Plan		X	
EP-503 – Electrical Details		X	
EP-507 – Electrical Details		X	
EP-509 – Electrical Details		X	
EP-511 – Electrical Details		X	
EP-512 – Electrical Details		X	
EP-515 – Electrical Details		X	
EP-517 – Electrical Details	X		
EA-101 – NAVAID Plan		X	
EA-102 – NAVAID Plan		X	
EA-103 – NAVAID Plan		X	
EA-104 – NAVAID Plan		X	
EA-105 – NAVAID Plan		X	
EA-106 – NAVAID Plan		X	
EA-107 – NAVAID Plan		X	
EA-110 – NAVAID Plan	X		
EA-201 – Runway 17C ALSF-2 Plan and Profile		X	
EA-202 – Runway 17C ALSF-2 Station Schedules		X	
EA-204 – NAVAID Conduit & Circuit Details		X	
EA-211 – PAR-56 Lampholder, Flasher, and Maint. Stand Installation Details		X	
EA-212 – Light Bar Configuration 21'-1" to 40'-0", MG-30 & MG-40 Foundation Details and Cable Assembly		X	
EA-213 – Light Bar Configuration 21'-1" to 40'-0", MG-30 & MG-40 Flasher Cabinet Layout and Installation Details		X	
EA-401 – Existing NE NAVAIDS (FOTS) Shelter Demolition		X	
EA-402 – Runway 17C ALSF-2 Substation Additions		X	
EA-403 – Existing NAVAIDS Power Cable Distribution		X	
EA-404 – Final NAVAIDS Power Cable Distribution		X	
EA-405 – Existing NAVAIDS Control / Comm Fiber Cable Distribution		X	
EA-406 – Proposed NAVAIDS Control / Comm Fiber Cable Distribution		X	
EA-407 – Marker Ball Installation Detail		X	
EA-408 – Enlarged NAVAID Cabling Plan		X	
EA-430 – NE Fiber Optic Loop Cable Replacement		X	
EA-431 – NE Fiber Optic Loop – Center ATCT / TRACON Building	X		
EA-432 – NE Fiber Optic Loop – East ATCT	X		
EA-505 – ALSF-2 Substation Addition Equipment Room		X	
EA-506 – FOTS NAVAIDS Room – Wall Elevations		X	
EA-511 – ALSF-2 Substation Addition – Outlet and Lighting Plans		X	
EA-515 – FAA Manhole and Handhole Details		X	
EA-516 – Ductbank Details		X	

### **Schedule Revisions**

1. Issue Addenda date is revised from February 23, 2018 to February 26, 2018.

### **RFB Revisions**

1. The RFB document has been revised as detailed below and replaced with Attachment C – RFB Revisions.
2. Appendix 1 – Bid Detail is replaced with the attached and revised as detailed below:
  - a. Paragraph 14) is revised to include acknowledgement of this Addendum No.2.
3. Appendix 6 – Bid Schedule is revised and replaced as posted on [www.dfwairport.com/business/solicitations](http://www.dfwairport.com/business/solicitations) as detailed below:
  - a. To reflect the revisions to the Technical Specifications and Plans.
4. Appendix 8 – Solicitation Schedule is revised and replaced with the attached.
  - a. See Schedule Revisions above.

### **Solicitation Questions (Q) and Answers (A)**

1. (Q)Reference: Drainage  
Question: On Sheet CG-152, the Rim elevations for MH 8 & 9 are about 70 ft above the final surface elevation. Please confirm that these elevations are correct  
  
(A) *Refer to Revised Drainage Plans, Plan Sheets CG-151 through CG-160.*
2. (Q) Reference: Cathodic Protection  
Question: There are conflicts between the cathodic protection details and the two specifications provided. Please forward Specifications 26 42 01, 26 42 02, and the cathodic protection details on Sheets CU-504 to DFW Cathodic Protection Code Compliance for review and comment. The details shown generally reflect what DFW has required vis-à-vis cathodic protection for isolated iron pipe fittings, valves, and hydrants. If the specifications are followed, the cost to provide cathodic protection systems will be much greater than what is normally required.  
  
(A) *Refer to revised Specifications 26 42 01 and 26 42 02.*
3. (Q) Reference: Marking  
Question: I reviewed the P-620 Pavement Marking specification and the reflective media states Federal Specification TT-B-1325D, Type I. The pavement marking drawing sheets CM-101 thru CM-107, Note 1 states all white and yellow markings shall receive Type III beads and all red shall receive Type IV. Please clarify what reflective media will be required on this project.  
  
(A) *Refer to revised Plan Sheets CM-101 through CM-107.*
4. (Q) Reference: Recycled Concrete Base Course  
Question: Will we be able access the material storage area without getting on public roads?  
  
(A) *No*

5. (Q) Reference: Haul Routes  
Question: Can we utilize off road dump trucks to take material to and from the concrete crusher?
- (A) No
6. (Q) Reference:  
Question: Is it the intent that the contractor provide for the termination of the Fiber Optic Cable at the four termination points, or will these terminations be performed by FAA personnel?
- (A) Refer to Sheet EA-430.
7. (Q) Reference: Marker balls  
Question: Will the electronic ball markers be required over all newly installed ducts and duct banks, or will the requirement be for FAA ducts only?
- (A) Refer to Sheet EA-407.
8. (Q) Reference: Light Bases  
Question: Will the use of precast base cans be allowable for any bases installed in turf?
- (A) Refer to Item L-115.
9. (Q) Reference: Escorts  
Question: – plans indicate that the Airport provides escorts contrary to information provided in the Pre-bid meeting. Please clarify if the escorts are contractor provided or if the airport will be providing them.
- (A) Refer to Revised CSPP and plan sheets GN-101 and GN-102.
10. (Q) Reference: P-152 and T-905  
Question: There is conflicting portions of this specification: 152-3.1 The quantity of Suitable Excavation Used as Embankment shall be the number of cubic yards measured in its original position after removal of topsoil and vegetation clearing and grubbing has been completed (Later in the same specification) The topsoil quantity removed and either placed directly or stockpiled will be paid as Suitable Excavation Used as Embankment. If topsoil quantity is to be paid as Suitable Excavation, how is it to be measured when the quantity of suitable excavation is measure after the topsoil removal? This needs to be clarified.
- (A) Refer to revised Item P-152
11. (Q) Reference: P-101  
Question: 101-3.1 Removal of Existing Pavement – in the last sentence regarding removal of concrete pavement it states, “the removed material shall be stored in the material management plan.” Clarify that this should be the material management “site”.
- (A) Refer to revised P-101.
12. (Q) Reference: P-101  
Question: Clarify that the “material management site” refers to the “East” Material Management Site (EMMS).
- (A) Refer to revised P-101.

13. (Q) Reference: P-101

Question: Is there a maximum size allowable for the concrete pavement removals sent to the Material Management Site? Or is there any further processing required of the demolished concrete?

(A) Refer to revised P-101.

14. (Q) Reference: P-219

Question: This item consists of a base course composed of recycled concrete base, crushed to meet a particular gradation...Materials - Aggregate for recycled concrete base shall be the material previously stockpiled in the material management site. Please confirm that the RCB material will be crushed to meet the P-219 specification?

(A) Item P-219 has been removed.

15. (Q) Reference P-219

Question: This item consists of a base course composed of recycled concrete base, crushed to meet a particular gradation...Materials - Aggregate for recycled concrete base shall be the material previously stockpiled in the material management site. Please confirm availability of water and space to set up pug mill operation in the MMS?

(A) Item P-219 has been removed.

16. (Q) Reference P-219

Question: This item consists of a base course composed of recycled concrete base, crushed to meet a particular gradation...Materials - Aggregate for recycled concrete base shall be the material previously stockpiled in the material management site. Please confirm that the RCB material will be available to meet this project's schedule requirements

(A) Item P-219 has been removed.

17. (Q) Reference: D-754

Question: Expansion joints of the type called for in the plans shall be constructed to replace dummy groove joints at spacing of approximately 100 feet. Please clarify type of expansion joint and provide details for all joints required for the concrete lined channel.

(A) Refer to Item D-900.

18. (Q) Reference: D-751

Question: There are 2 bid items for underdrain cleanouts. Underdrain Cleanout, Type A and Underdrain Cleanout, Type B. The plan sheets only call out "Underdrain Cleanout" and do not note either Type A or Type B. Please clarify the Underdrain Cleanouts and if provide details for Type A and Type B and plan sheets which indicate each location of each type of cleanout.

(A) Refer to revised Item D-705 and revised Bid Schedule.

19. (Q)Reference D-705

Question: The plans don't have a clear detail for the 8" perforated underdrain. Please provide a clear detail for the 8" perforated underdrain pipe.

(A) Refer to revised Plan Sheet CG-505



20. (Q) Reference: D-752

Question: There is a Bedding and Excavation Dimensions Table on plan sheet CG503 for the RCP but there is none for the 2'x4' Reinforced Concrete Box Culvert (Class III). Please add this information for the Reinforced CBC.

(A) Refer to revised Plan Sheet CG-503.

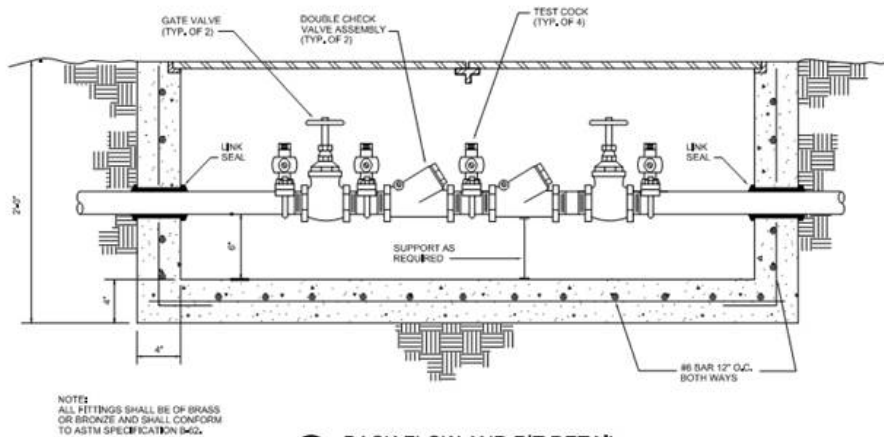
21. (Q) Reference: Bid Schedule

Question: Item numbers 73 and 74 in the bid schedule outline 18.5" Non reinforced and 18.5" Reinforced PCCP respectively. In the plan set typical sections there is not a section that outlines 18.5" PCCP but only 12" CRCP, 17" PCCP and 19.5" PCCP. Please clarify what the pavement depths are intended for each location. If 18.5" PCCP is intended please include a typical section for that area.

(A) Refer to revised plan sheets CS-302 through CS-306 and revised Bid Schedule

22. (Q) Reference: Item 33 12 16

Question: Bid quantity is 1 each. Plan sheet CU-502 shows Backflow and Pit Detail



What constitutes the "8" PVC Check Valve"? Is it intended to be this entire detail? Please provide more detail for the pit, frame and grate, supports, etc.

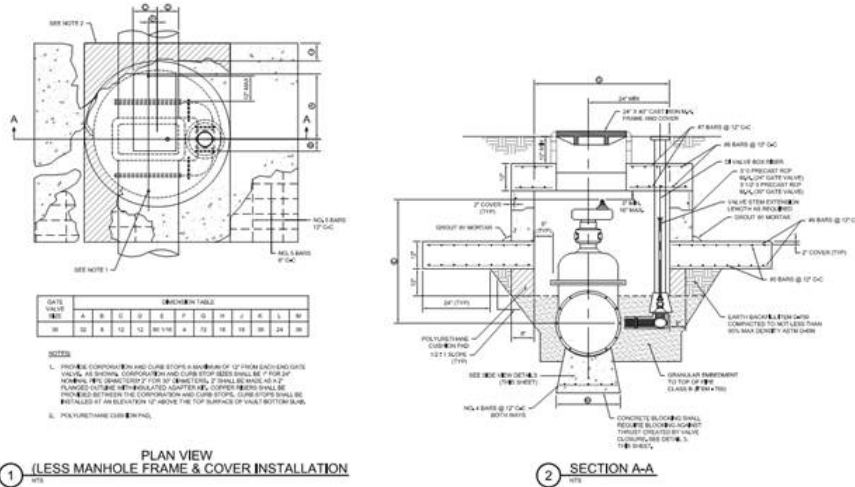
(A) Refer to revised Item 33 12 16, and revised Plan Sheet CU-502.

23. (Q) Reference: Item 33 12 16.29

Question: Please confirm that this item includes the manhole & ring & cover.

(A) Refer to revised Item 33 12 16.29.

24. (Q) Reference: Item 33 12 16  
 Question: Plan Sheet CU-505 shows the following detail:



Please clarify what is included in the bid item and provide specifications and details necessary to construct.

(A) Refer to revised Item 33 12 16.

25. (Q)Reference: Fuel Line Protection  
 Question: What are the requirements and details for this Lump Sum structure? How much clearance is required between the storm line and the fuel line? What type of structure will the fuel line owner require?

(A) Refer to revised plan sheet CU-900

26. (Q)Reference: P-155  
 Question: No sulfate testing is indicated. If sulfate testing is required, how will removal and replacement of unacceptable material as a result of the testing, be paid for.

(A) Refer to Item P-152

27. (Q)Reference: P-102  
 Question: Is the intent of Specification P-102 to crush all (100%) of the PCCP requiring removal through this contract, to include any PCCP roadways, into material meeting the requirements for RCB?

(A) Refer to revised Item P-102.

28. (Q)Reference: P-102  
 Question: Section 102-1.1 of Specification P-102 states "The Contractor will be responsible for setting up a portable crushing plant and associated equipment on or near the project site adjacent to the existing concrete recyclable materials stockpile(s) ...". Where is the referenced stockpile?

(A) Refer to revised Items P-102.

- 29. (Q)** Reference: P-102  
Question: If the stockpile referenced in Section 102-1.1 is at the MMS that will be established by the contractor for the Runway 17C/35C Rehabilitation project (9500614): Will the contractor for 9500614 be responsible for stockpiling this material?
- (A) Refer to revised Plan Sheet GC-101A, Note 2.
- 30. (Q)**Reference: P-102  
Question: If the stockpile referenced in Section 102-1.1 is at the MMS that will be established by the contractor for the Runway 17C/35C Rehabilitation project (9500614): Will the MMS be established through 9500614 in time for use on 9500623?
- (A) Refer to revised Plan Sheet GC-101A, Note 2.
- 31. (Q)**Reference: P-102  
Question: If the stockpile referenced in Section 102-1.1 is at the MMS that will be established by the contractor for the Runway 17C/35C Rehabilitation project (9500614): Will the contractor for 9500623 be responsible for anything, to include flaggers, gate guards, stockpiling, at the MMS?
- (A) Refer to revised Plan Sheet GC-101A, Note 2.
- 32. (Q)** Reference: P-102  
Question: If the stockpile referenced in Section 102-1.1 is at the MMS that will be established by the contractor for the Runway 17C/35C Rehabilitation project (9500614): Is the statement in Section 102-1.1 intended only for removed PCCP for 9500623 that is not used in the construction of 9500623?
- (A) Refer to revised Plan Sheet GC-101A, Note 2. and revised Item P-102.
- 33. (Q)** Reference P-102  
Question: If the "existing" stockpile referenced in Section 102-1.1 is located near the crusher site specified for 9500614: Will the contractor for 9500623 be required to set up the crusher within the staging area for 9500614?
- (A) Refer to revised Item P-102.
- 34. (Q)** Reference P-102  
Question: If the "existing" stockpile referenced in Section 102-1.1 is located near the crusher site specified for 9500614: What will be the haul route for transporting removed PCCP to the crusher?
- (A) Refer to plan sheet GC-101A and revised Item P-102
- 35. (Q)** Reference P-102  
Question: If the "existing" stockpile referenced in Section 102-1.1 is located near the crusher site specified for 9500614: Will contractor be required to haul removed PCCP through the 9500614 work area?
- (A) Refer to plan sheet GC-101A and revised Item P-102.

- 36. (Q) Reference P-102**  
Question: If the “existing” stockpile referenced in Section 102-1.1 is located near the crusher site specified for 9500614: If contractor will be required to haul removed PCCP through the 9500614 work area, who is responsible for escorts and flaggers?
- (A) Refer to plan sheet GC-101A, Note 2.*
- 37. (Q) Reference: P-102**  
Question: Will the contractor be allowed to set up the crusher adjacent to the “Mobilization and Staging Yard” as detailed on plan sheet GC-102.
- (A) Refer to revised Item P-102.*
- 38. (Q) Reference: P-101**  
Question: Technical Specifications Section P-101-3.1 a. Concrete Pavement states “The removed material shall be stored in the material management plan”. Should this read “...management site.”?
- (A) Refer to revised P-101.*
- 39. (Q) Reference: Section 01 50 13**  
Question: Part 3 paragraph 3.1A of Specification 01 50 13 states “The Contractor shall provide a minimum of three (3) Construction Field Offices ...” Part 2 of this specification includes a drawing depicting a 60'0” x 36'0” office trailer setup. Please clarify what “three (3) Construction Offices” consists of. Is this three office trailer setups as detailed in the drawing (3 EA – triple wides) or one triple-wide?
- (A) Refer to revised Section 01 50 13.*
- 40. (Q) Reference: Fuel Line Protection**  
Question: Please provide details for the fuel line protection referenced on plan sheet CU-900.
- (A) Refer to revised plan sheet CU-900*
- 41. (Q) Reference: Drainage Plan CG-151**  
Question: Plan sheet CG-151 includes a callout for 165.43 LF of “8” RCP”. Please clarify the pipe size and type for this line.
- (A) Refer to Revised Plan Sheet CG-151.*
- 42. (Q) Reference: Drainage Plan CG-151**  
Question: Plan sheet CG-151 includes a callout for 487.71 LF of “4’x2’ “ UD PIPE”. Please clarify the size, type, and function of this line.
- (A) Refer to Revised Plan Sheet CG-151.*
- 43. (Q) Reference: Plan Sheet CG-505**  
Question: Drainage Plan sheet CG-505 calls out the Underdrain pipe to be a 8” smooth-wall perforated P.V.C. Pipe (ASTM F 758), Base Bid Item No. 95 calls this out to be a 8” perforated HDPE Underdrain Pipe. Please specify/clarify correct type of underdrain piping with associated detail.
- (A) Refer to revised Plan Sheet CG-505*

**44.** (Q) Reference: Erosion and Sedimentation Control

Question: Please verify that there is no silt fence required within the AOA for this project.

*(A) Refer to Plan Sheets CE-100 through CE-110.*

**45.** (Q) Reference Embankment

Question: May the contractor obtain material required for embankments in excess of what is excavated per the lines and grades shown in the plans from any existing/future stockpiles on DFW Airport property? If so, what is the location of stockpile(s)?

*(A) Refer to the Bid Schedule for quantities.*

**ATTACHMENT C – RFB Revisions**

## Appendix 1 – Bid Detail

### Contract No. 9500623 Northeast End Around Taxiway - Package I East Air Freight Taxiway and Utilities

- 1) This is a solicitation for bids on the construction of the project detailed in the contract documents of Appendix 5 – The Agreement. The Contractor shall be responsible for reviewing all existing conditions associated with the work prior to commencement of work activities.
- 2) The Board reserves the right to reject any bid for any reason, including if, on the face of the bid received, it is clear that acceptance of the bid would not comply with any applicable bidding laws, rules, or regulations.
- 3) The undersigned Contractor, declares that the only person or parties interested in this Bid as principals are those named herein; that this Bid is made without collusion with any other person, firm, or corporation; that he has carefully examined the Bid Requirements, all incorporated references and Appendices, and the conditions and classes of materials of the Work; and will provide all the necessary supervision, labor, machinery, tools, supplies, equipment, transportation and other facilities, apparatus, and other means of construction and will do all the Work and furnish all the materials called for by such, in the manner prescribed therein and according to the requirements therein set forth, and to perform all other obligations imposed by the Contract Documents for the prices named in the Bid Schedule hereinafter appearing.
- 4) It is understood and agreed that if awarded the Contract, the Work will commence within ten (10) calendar days after the date of the Notice to Proceed and that the total Work will be completed in accordance with the Schedule of Construction set forth herein.
- 5) It is further understood that the Prevailing Wage Rates TX180035 revised 01/05/2018 and TX180291 revised 01/12/2018, issued by the Department of Labor as established by law are to govern the Work. The Contractor certifies that he has examined the wage rate determination and that prices bid are based on compliance with said determination.
- 6) Accompanying this Bid is the required Bid Guaranty consisting of Bid Bond or Cashiers' Check in the amount of five percent (5%) of the total Bid, or in the case of bid alternates, five percent (5%) of the highest total Bid. The certified check accompanying a Bid shall be returned to the Contractor upon execution of the Contract.
- 7) In the event of the award of a Contract, the undersigned will deposit with the Board a Contract Performance Bond and a Payment Bond as required by the Contract Documents, guarantying faithful performance of the Contract, and any payment of all labor, materials and other sundry items, in accordance with the Contract Documents, and will deliver certificates of insurance evidencing insurance required by the Contract Documents.
- 8) The Work proposed to be done shall be fully completed and finished to the entire satisfaction of the Board.
- 9) The undersigned certifies that the price contained in this Bid has been carefully reviewed and is submitted as correct and final.
- 10) In conformity with the Special Provisions, the amount of liquidated damages for this Contract shall be as shown in Article 1.0, of the Special Provisions.

11) Ancillary/Integral Professional Services – Contractor certifies that in selecting an architect, engineer or land surveyor, etc., to provide professional services, if any, that are required by the specifications, Contractor shall not do so on the basis of competitive bids but shall make such selection on the basis of demonstrated competence and qualifications to perform the services in the manner provided by Section 2254-004 of the Texas Government Code.

12) Certification of compliance with the provisions of Section 2254-004 of the Texas Government Code: \_\_\_\_\_

13) Certificate Regarding Debarment And Suspension – By submitting a bid/proposal under this solicitation, the Contractor or offeror certifies that at the time the Contractor or offeror submits its bid/proposal that neither it nor its principals are presently debarred or suspended by any Federal department or agency from participation in this transaction.

14) Receipt is hereby acknowledged of the following Addenda to the Contract Documents:

Addendum No. 1	Date Received	<u>02/13/18</u>	Ack. By	_____
Addendum No. 2	Date Received	<u>02/23/18</u>	Ack. By	_____
Addendum No. 3	Date Received	_____	Ack. By	_____
Addendum No. 4	Date Received	_____	Ack. By	_____
Addendum No. 5	Date Received	_____	Ack. By	_____

**15) Summary of Bid**

a. **Base Bid** – Contractor agrees to construct **Contract No. 9500623, Northeast End Around Taxiway - Package I East Air Freight Taxiway and Utilities**, in accordance with the contract terms, plans and specifications and to complete the work within One Hundred Eighty-Five (185) consecutive calendar days for substantial completion, with an additional Sixty (60) consecutive calendar days for final completion, from the date set forth in the Notice to Proceed in accordance with the Bid Schedule and Unit Prices attached hereto, for the following amount:

BASE BID PRICE: \_\_\_\_\_

\_\_\_\_\_ DOLLARS and \_\_\_\_/100 (\$ \_\_\_\_\_)

**Separate Cost Breakdown (for Tax Exemption Information)**

Materials to be Incorporated .....	\$ _____
All Other Costs .....	\$ _____
Total Base Bid .....	\$ _____

16) The contract, if awarded, shall be to the lowest responsive, responsible Contractor whose bid, conforming with all materials terms and conditions of the invitation for bids, is the lowest in price.

17) When alternates are used, the Board reserves the right to Contract for any combination of Base and or Alternates stated, or none of the above. Contractor must bid on the base and all alternates. Bids addressing only the base or alternate items will be considered non-responsive.

18) The Contractor shall complete the following statement by checking the appropriate space.

- a. The Contractor has \_\_\_\_ has not \_\_\_\_ participated in a previous contract subject to the equal opportunity clause prescribed by Executive Order 10925, or Executive Order 11114, or Executive Order 11246.
- b. The Contractor has \_\_\_\_ has not \_\_\_\_ submitted all compliance reports in connection with any such contract due under the applicable filing requirements; and that representations indicating



submission of required compliance reports signed by proposed subcontractors will be obtained prior to award of subcontracts.

- c. If the Contractor has participated in a previous contract subject to the equal opportunity clause and has not submitted compliance reports due under applicable filing requirements, the Contractor shall submit a compliance report on Standard Form 100, "Employee Information Report EEO-1" prior to the award of contract.
- d. Standard Form 100 is normally furnished contractors annually, based on a mailing list currently maintained by the Joint Reporting Committee. In the event a contractor has not received the form, he may obtain it by writing to the following address: Joint Reporting Committee, 1800 G Street, Washington, DC 20506.
- e. ( ) The below listed firm is a Disadvantaged Business Enterprise (DBE / M/WBE).

NAME OF CONTRACTOR/CORPORATION: \_\_\_\_\_

CONTRACTOR'S ADDRESS: \_\_\_\_\_

CITY, STATE, ZIP: \_\_\_\_\_ PHONE NO.: \_\_\_\_\_

\_\_\_\_\_  
PRINTED NAME & TITLE OF PERSON SIGNING BID

\_\_\_\_\_  
FEDERAL I.D. NUMBER

SIGNATURE: \_\_\_\_\_

(Seal, if bid by a Corporation)

## Appendix 8 – Solicitation Schedule

### Northeast End Around Taxiway - Package I East Air Freight Taxiway and Utilities CONTRACT NO. 9500623

<b>Advertisements</b>	January 21, 28, 2018 February 04, 2018
<b>Bid Documents, Plans and Specifications available on website</b>	January 22, 2018
<b>Pre-Bid Conference No. 1, DCC Rm 112 Site Visit after Conference</b>	January 30, 11:00am
<b>Deadline for Questions</b>	February 16, 2018, 5:00pm
<b>Issue Addenda (if applicable)</b>	February <del>23</del> <sup>26</sup> , 2018
<b>Bid Opening DCC Rm 112</b>	March 2, 2018, 1:00pm
<b>Airport Board Action</b>	April 2018
<b>Estimated Notice to Proceed</b>	April 2018
<b>Estimated Contract Duration</b>	245 Calendar Days

*Bid Packages in response to this RFB must be received by Board’s Program Solicitation Manager, Travis Sanderfer, at the following address: Design, Code and Construction Department, 3003 South Service Road, DFW Airport, Texas 75261, no later than listed due date and time above. Any Bid Package received after this time will not be considered and will be rejected and returned.*

*Solicitation Questions – All e-mails must be addressed to [DFWAirportSolicitations@DFWAirport.com](mailto:DFWAirportSolicitations@DFWAirport.com) and include in the Subject Line “Questions Regarding Agreement No.9500623 Northeast End Around Taxiway - Package I East Air Freight Taxiway and Utilities”. Questions received after the designated submittal date will not be considered.*