

EXISTING OVERHEAD COILING DOOR TO BE ABANDONED IN PLACE

ALUMINUM STORE FRONT ENCLOSURE TO MATCH EXISTING IN HEIGHT AND GENERAL CONFIGURATION

PROPOSED NEW OVERHEAD COILING DOOR LOCATION
LATERAL SIDA WALL WITH 2 LAYERS OF GYP TOWARDS LAND SIDE WITH ASSOCIATED BRACING AT AIR SIDE

REVISED OR NEW ARCHITECTURAL CEILING PANEL

VERTICAL SIDA WALL WITH GYP ON BOTH SIDES TO UNDERSIDE OF STRUCTURE

EXISTING UPPER CEILING

ARCHITECTURAL CEILING PANELS

SIDA WALL WITH 2 LAYERS OF GYP ON LAND SIDE AND 1 LAYER ON AIR SIDE TO UNDERSIDE OF STRUCTURE

ALUMINUM STORE FRONT ENCLOSURE TO MATCH EXISTING IN HEIGHT AND GENERAL CONFIGURATION

T/F.F. AIR SIDE LAND SIDE

14'-11¹¹/₁₆"

12'-6³/₈"

9'-8"

6'-10¹³/₁₆"

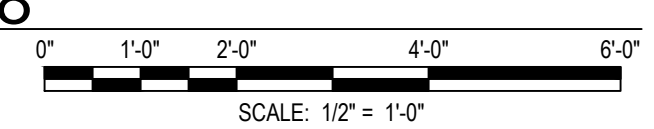
17'-2"

10'-3"

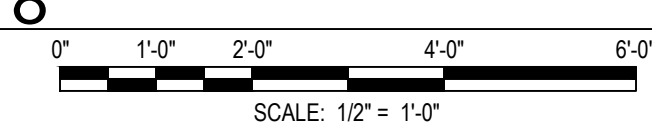
10'

8'

01 SECTION D-18
SCALE: 1/2" = 1'-0"



02 SECTION D-18
SCALE: 1/2" = 1'-0"



PRELIMINARY INTERIM REVIEW ONLY
IT IS NOT INTENDED FOR CONSTRUCTION PURPOSES.
EXP U.S. SERVICES
TBAE REG # BR422

AUTOMATED SCREENING LANES
DFW INTERNATIONAL AIRPORT
CHECKPOINT D18

DRAWN BY: MDO
APPROVED BY: KA
ISSUE DATE: 11/14/2016

NO.	DATE	REVISION
01	11/14/2016	35% SUBMITTAL

CONTRACT NUMBER: 9500551

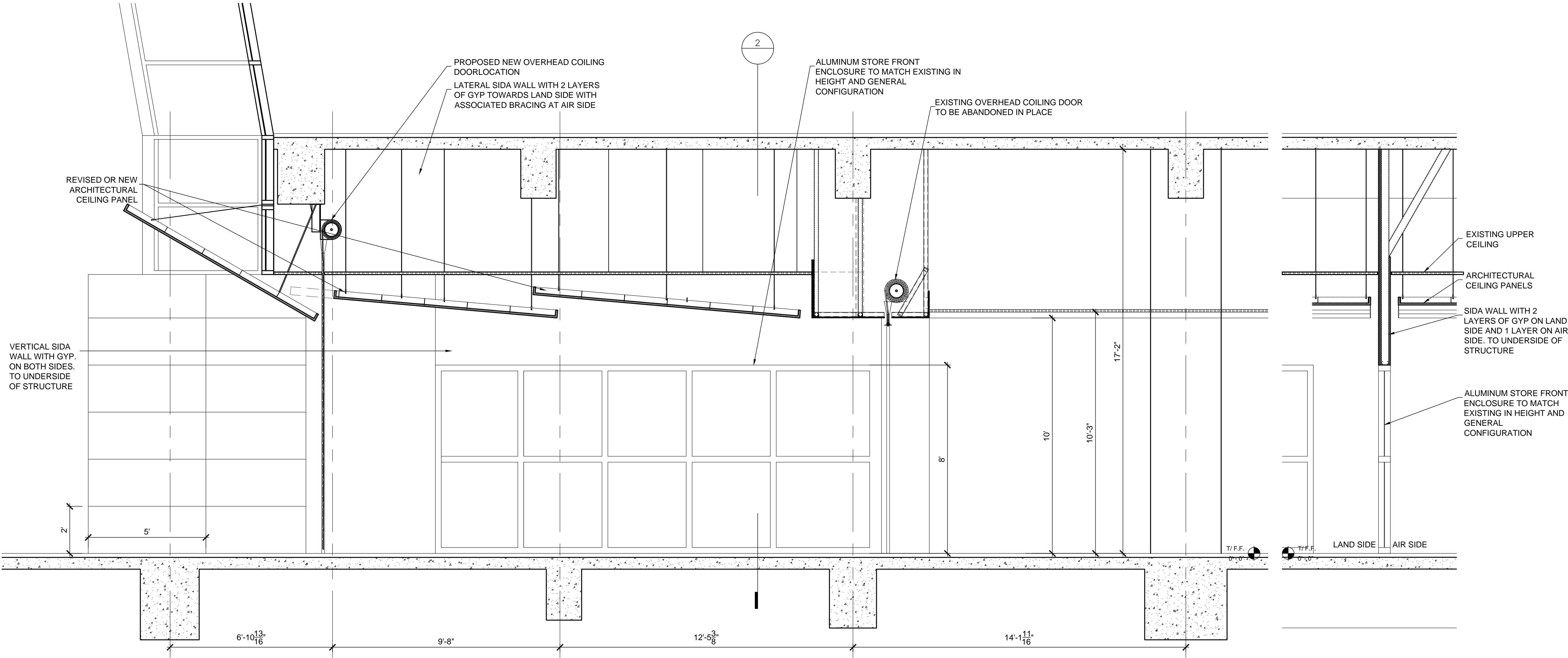
TA NUMBER:

SECTIONS D-18

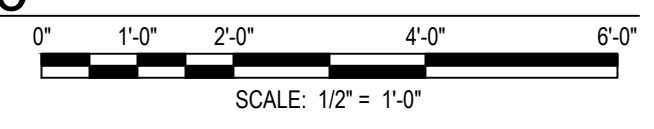
SHEET NUMBER

AE301-3-K4-1

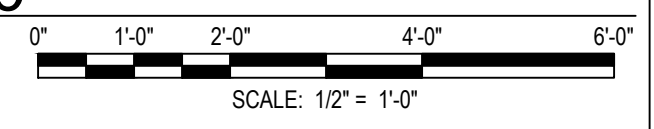
09 OF 01 SHEETS



01 SECTION D-30
SCALE: 1/2" = 1'-0"



02 SECTION D-30
SCALE: 1/2" = 1'-0"



PRELIMINARY
INTERIM REVIEW ONLY
IT IS NOT INTENDED FOR
CONSTRUCTION PURPOSES.
EXP U.S. SERVICES
TBAE REG # BR422

**AUTOMATED SCREENING LANES
DFW INTERNATIONAL AIRPORT
CHECKPOINT D30**

DRAWN BY:
MDO
APPROVED BY:
KA
ISSUE DATE:
11/14/2016

NO.	DATE	REVISION
01	11/14/2016	35% SUBMITTAL

CONTRACT NUMBER: 9500551

SECTION D-30

TA NUMBER:

SHEET NUMBER

AE301-3-E4-1

09 OF 01 SHEETS

Nov 25, 2016 - 2:56pm